

## DELIVERING FULL AUTOMATION SOLUTIONS FOR FACE MASK MANUFACTURING MACHINERY

COVID-19 has caused surging demand for face masks. Inovance – a \$1bn+ global industrial automation company – has a team of engineers with significant knowhow about automated face mask manufacturing machinery.

### The challenge:

A face mask machinery OEM had a problem with their machine design: the sealing edge and the ear strap were fluctuating up to 3 mm out of position during the manufacturing process. Inovance's team of engineers with face mask machine experience was called in to help.

### The solution

Inovance deployed an EtherCAT motion controller with CAM functionality, along with high performance Inovance servo drives and motors, and an HMI.

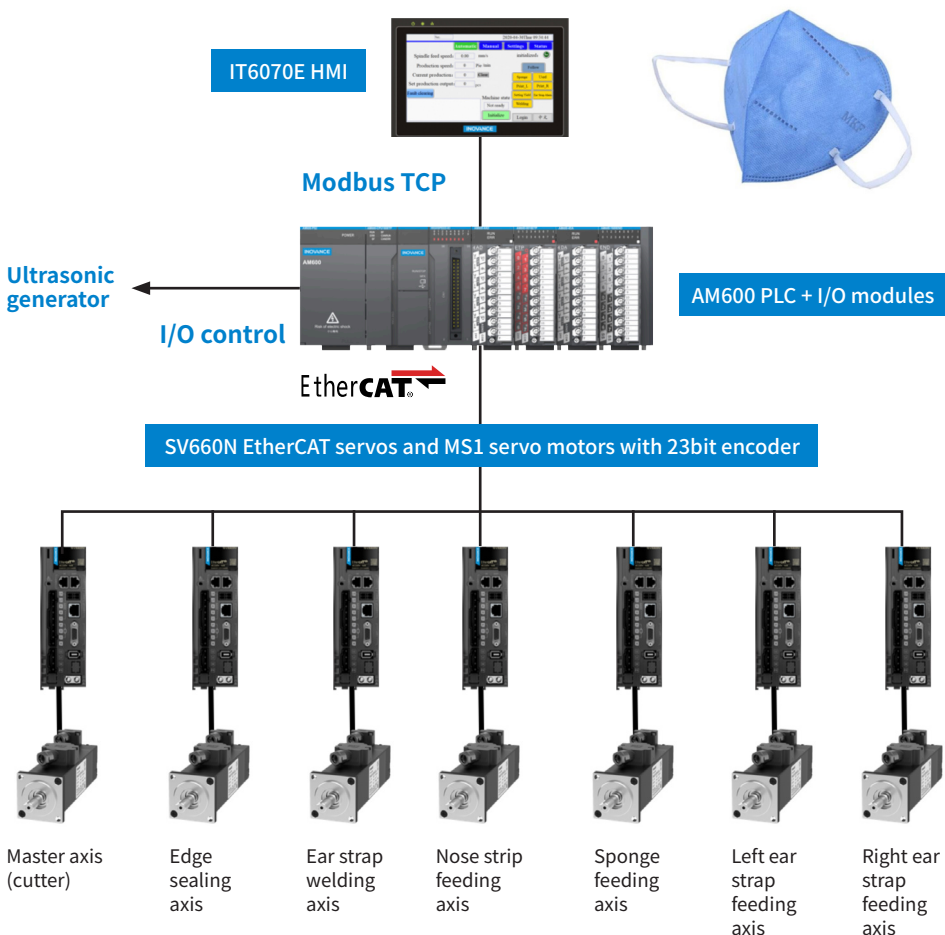
The example system shown below was created for an OEM customer in Asia.

### The benefits

**The Inovance solution offered radical improvements**

- Three millisecond scanning periods
- Automatic deviation correction at the folding station
- Sealing edge positioning accuracy improved from  $\pm 3$  mm to  $\pm 0.5$  mm
- Stable operational speed for moving fabric smoothly increased from 105 mm/s to 130 mm/s

### Inovance's automation solution for face mask machinery



## INOVANCE FACTFILE

**140 OEM face mask machine customers**

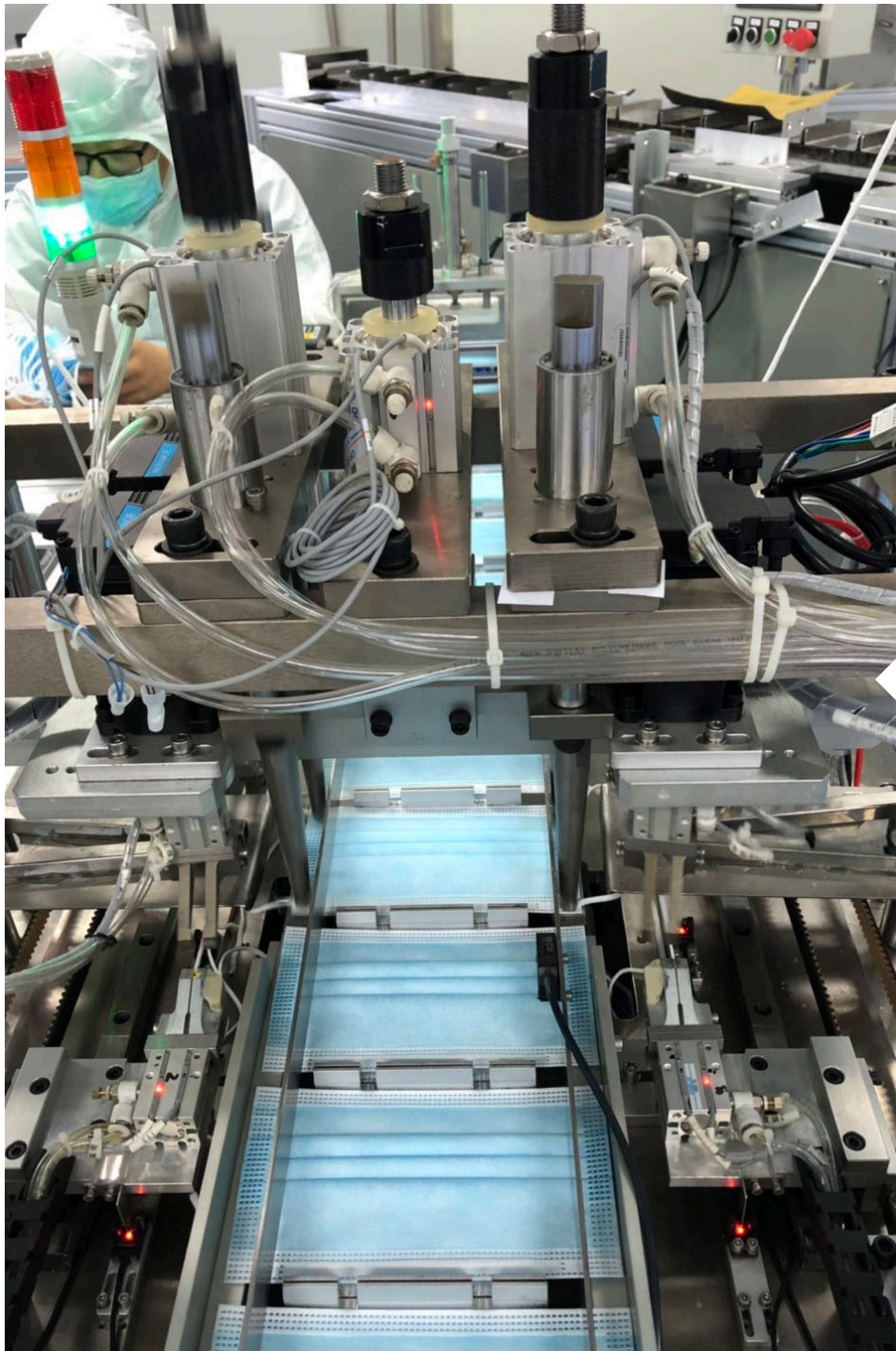
Products include:

- AC drives
- Motion control
- PLCs & HMIs
- CNCs
- Industrial robots

### WE HAVE OVER 140 OEM FACE MASK CUSTOMERS IN ASIA

Our drives, motors, PLCs, and HMIs are controlling machines making all types of face masks.

Inovance's European division – Inovance Technology Europe – is ready to work with established European OEMs looking to switch to the manufacture of face mask machines.



A mask-making machine that uses Inovance's automation system

Masks coming off a production line using Inovance automation components

Inovance's controller and servo drive package in an N95 face mask production line

